

RETRACTABLE SHELL

HORIZONTAL PRESSURE LEAF FILTER SYSTEMS

This horizontal pressure leaf filter system has been designed with a retractable shell. The bayonet ring allows the filter to be opened hydraulically.

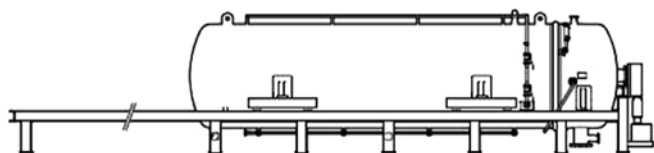
For the discharge of the cake, the internal body of the system remains in situ and the shell is moved with an electric or hydraulic control. The shell is supported by rails and moves over the bundle.

The pressure filter leaf elements are then accessible by moving the tank away from the bundle.



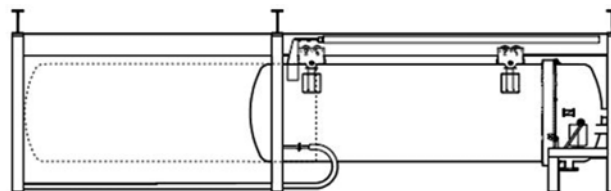
FEATURES AND BENEFITS

- The retractable shell makes it easy and safe to access the pressure filter leaf element for maintenance and cleaning.
- Cake discharge is easily done once the filter is opened.
- The pressure filter leaves are positioned vertically making cake discharge easy.



Retractable shell with a lower support frame.

The bundle doesn't move here, the shell is supported by rails and moves over the bundle.



Retractable shell with an overhead suspension frame

The bundle doesn't move, the shell hangs from a support structure and moves over the bundle.



amafilter

Filtration Group

ООО «ТИ-СИСТЕМС» ИНЖИНИРИНГ И ПОСТАВКА ТЕХНОЛОГИЧЕСКОГО ОБОРУДОВАНИЯ

Интернет: www.tisys.ru www.tisys.kz www.tisys.by www.tesec.ru www.ти-системс.рф

Телефоны: +7 (495) 7774788, 7489626, (925) 5007155, 54, 65 Эл. почта: info@tisys.ru info@tisys.kz info@tisys.by